



International
Network —
Connectors

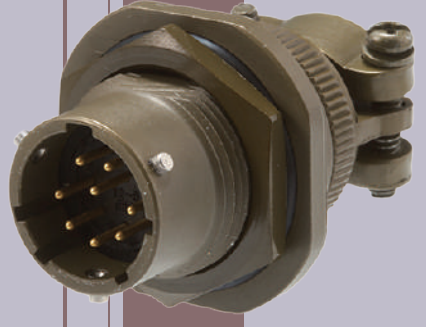


CONNECTOR GUIDE

MIL-DTL 5015 Series Connectors

MIL-DTL 26482 Series 1 Connectors

VG95234 Series Connectors



MIL-DTL 26482 Series I CONNECTORS



Table of Contents

page

Ordering Information	26
Technical Specifications	27
Mounting Dimensions	28

Contact and Insert Arrangements

Insert Arrangement & Alternate Positioning	29
Contact Arrangement	30

MIL-DTL 26482 Series I

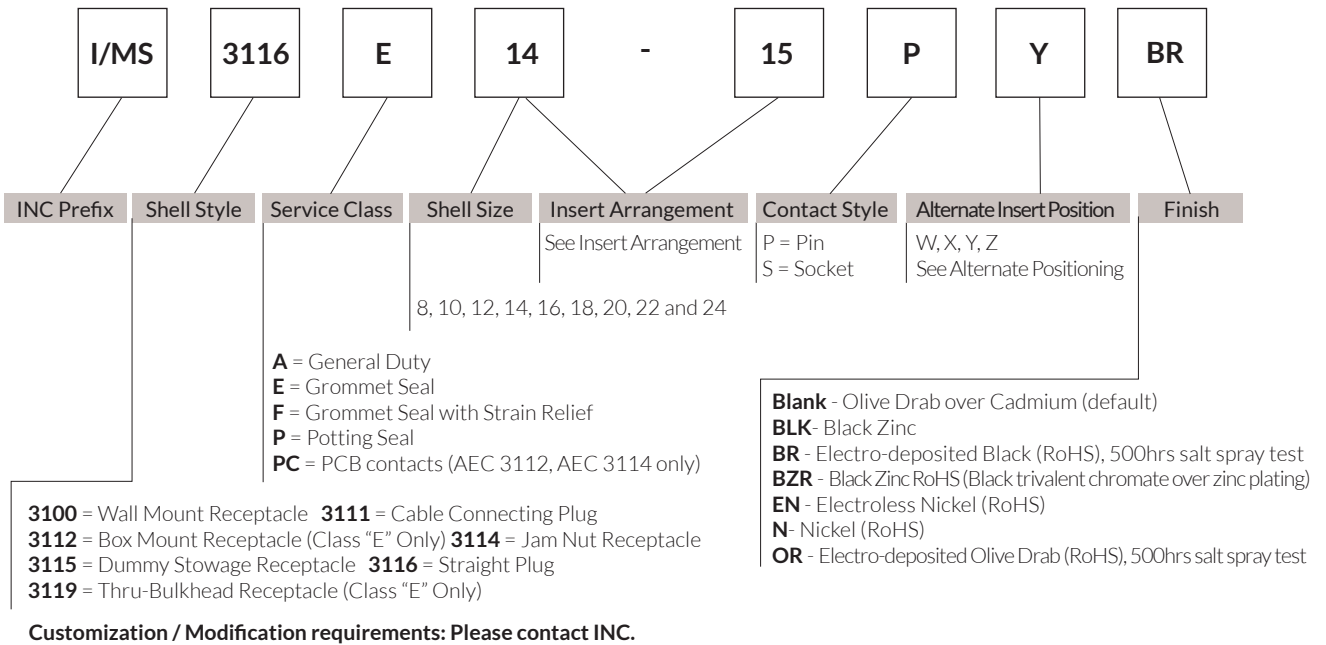
Wall Mounting Receptacle (I/MS 3110)	32
Cable Connecting Plug (I/MS 3111)	34
Box Mounting Receptacle (I/MS 3112)	36
Box Mounting Receptacle for Rear Panel Mounting (I/MS 3112EP)	36
Box Mounting Receptacle with PCB Contacts (I/MS 3112PC)	37
Jam Nut Receptacle with PCB Contacts (I/MS 3114PC)	37
Jam Nut Receptacle (I/MS 3114)	38
Straight Plug (I/MS 3116)	40
Dummy Stowage Receptacle (I/MS 3115)	42
Thru-Bulkhead Receptacle (I/MS 3119)	42

MIL-DTL 26482 Series I Accessories

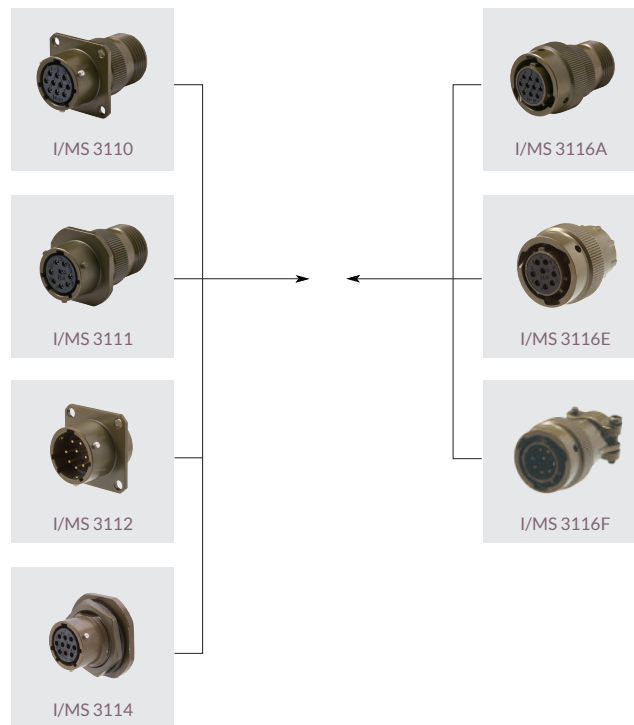
Protective Cover for Receptacle (I/MS 3181)	43
Protective Cover for Plug (I/MS 3180)	43

This Connector Guide is intended to provide general information about various products. Information contained herein is for general reference only and subject to change without notice. Products may deviate from the listed description, specifications, technical data, dimensions and illustrations provided in this Connector Guide. Please contact INC to discuss your specific application to ensure that the desired products meet your specific requirements. No information or data contained in this Connector Guide shall be construed to create any liability on the part of INC.

Ordering Information



Typical Mating Guide



Technical Specifications

[Materials & Finishes]

Shell, Endbell	Aluminum alloy Olive drab chromate coating over cadmium plating (Refer to Ordering Information page 26 for alternative finish options)
Insulator	Synthetic rubber
Contact	Copper alloy / Gold plating
Gasket and Grommet	Synthetic rubber

[Electrical Data]

Operating Voltage Test Voltage	Service Rating	Test Altitude	Maximum Operating		Test Voltage	
			DC	AC (r. m. s)	DC	AC (r. m. s)
	I	Sea Level	850	600	2,100	1,500
	II	Sea Level	1,275	1,000	3,200	2,300
	I	70,000 feet	-	300	535	375
	II	70,000 feet	-	450	770	500

Current Rating	Contact Size	Rated Current (Amps)	Test Current (Amps)	Potential Drop (Millivolts)
	16	22.0	13.0	<50

Wire Range Size	24 to 16 AWG
Insulator Resistance	Min. 5000 MΩ at 77°F (+25°C)

[Mechanical Data]

Operating Temperature -67°F (-55°C) to +257°F (+125°C)

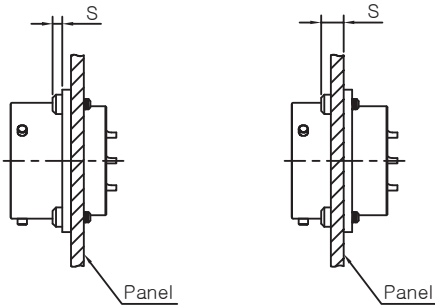
Wire Range	Contact Size	AWG Wire Size	Insulation Outside Diameter Limit			
			Min.		Max.	
			Inches	mm	Inches	mm
	20	24,22 and 20	0.060	1.52	0.083	2.11
	16	20,18 and 16	0.066	1.68	0.109	2.77

Durability	500 cycles of mating / unmating operations
Salt Spray	48 hours at environmental temperature (Cadmium Olive Drab plating) 500 hours at environmental temperature (Electro-deposited Olive Drab/Black RoHS plating)
Vibration	10 to 2000Hz (15g) 10 microseconds maximum discontinuity.
Shock	50g's, 11 ms duration, three major axes. 10 microseconds maximum discontinuity.
Contact Style	Solder
Number of Contact	2 to 61

Contact Retention	Contact Size	Axial Load Min	
		Newtons	Lbs.
	20	66.7	15
	16	111.2	25

Mounting Dimensions

[Panel Mounting Data]



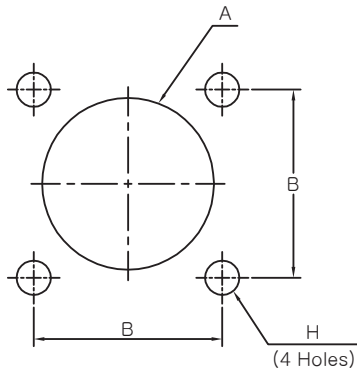
Front Panel Mounting

Rear Panel Mounting

Max. Panel & Screw Head

Shell Size	AEC3110	AEC3112	AEC3119
8	2.21	2.21	5.54
10	2.21	2.21	5.54
12	2.21	2.21	5.54
14	2.21	2.21	5.54
16	2.21	2.21	5.54
18	2.21	2.21	5.54
20	5.38	5.38	8.74
22	5.38	5.38	8.74
24	5.38	5.38	7.90

[Panel Cutout Dimensions]

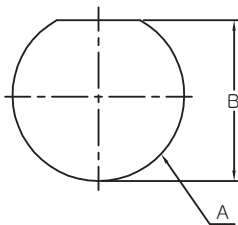


Box & Wall Mounting Receptacle

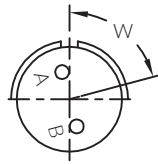
Shell Size	A dia. +0.25 / -0.00	B(TP)	H dia. ±0.13
8	15.70	15.09	3.18
10	18.67	18.26	3.18
12	21.82	20.26	3.18
14	25.02	23.01	3.18
16	28.27	24.61	3.18
18	31.37	26.97	3.18
20	34.57	29.43	3.18
22	37.72	31.75	3.18
24	40.92	34.93	3.94

Jam Nut Receptacle

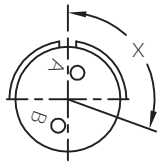
Shell Size	A dia. +0.25 / -0.00	B +0.00 / -0.25
8	14.68	13.8
10	17.7	17.0
12	22.5	21.1
14	25.6	24.3
16	28.8	27.5
18	32.0	30.7
20	35.2	33.9
22	38.3	37.1
24	41.5	40.4



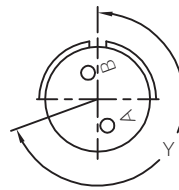
Insert Arrangement & Alternate Positioning



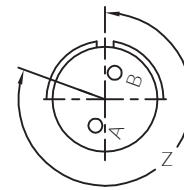
Position W



Position X



Position Y



Position Z

View shows front face of pin insert or rear of socket insert

Shell Size	Insert Number	Service Rating	Total Contacts	Contact Size			Alternate Position Degrees			
				20	16	12	W	X	Y	X
8	8-2	I	2	2			58	122	-	-
	8-3	I	3	3			62	210	-	-
	8-4	I	4	4			45	-	-	-
	8-33	I	3	3			90	-	-	-
	8-98	I	3	3			60	-	-	-
10	10-6	I	6	6			90	-	-	-
	10-7	I	7	7			-	-	-	-
	10-98	I	6	6			90	180	240	270
12	12-3	II	3		3		-	-	180	-
	12-8	I	8	8			90	112	203	292
	12-10	I	10	10			60	155	270	295
	12-12	I	12	12			-	-	-	-
	12-14	I	14	14			-	-	-	-
14	14-5	II	5		5		40	92	184	273
	14-12	I	12	8	4		43	90	-	-
	14-15	I	15	14	1		17	110	155	234
	14-18	I	18	18			15	90	180	270
	14-19	I	19	19			30	165	345	-

Shell Size	Insert Number	Service Rating	Total Contacts	Contact Size			Alternate Position Degrees			
				20	16	12	W	X	Y	X
16	16-8	II	8		8		54	152	180	331
	16-23	I	23	22	1		158	270	-	-
	16-26	I	26	26			60	-	275	338
18	18-11	II	11		11		62	119	241	340
	18-30	I	30	29	1		180	193	285	350
20	18-32	I	32	32			85	138	222	265
	20-16	II	16		16		238	318	333	347
	20-24	I	24	24			70	145	215	290
	20-27	I	27	27			72	144	216	288
	20-39	I	39	37	2		83	144	252	333
	20-41	I	41	41			45	126	225	-
	22-21	II	21		21		16	135	175	349
22	22-32	I	32	32			72	145	215	288
	22-34	I	34	34			62	142	218	298
	22-41	I	41	27	14		39	135	264	-
24	22-55	I	55	55			30	142	226	314
	24-31	I	31		31		90	225	255	-
	24-61	I	61	61			90	180	270	324

Contact Arrangement

Front face of pin insert or rear face of socket insert illustrated.

CONTACT LEGEND 20 16

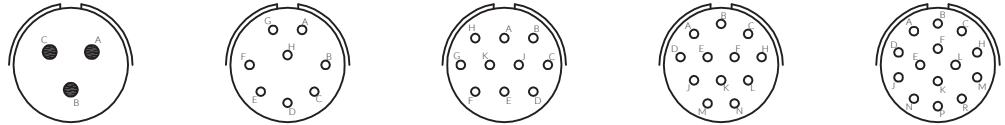
Shell Size 8

Shell Size 10



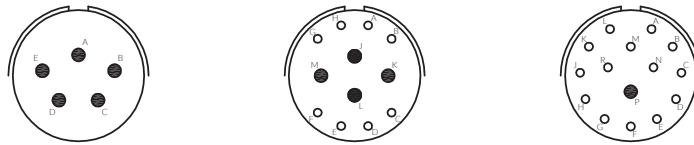
Insert Arrangement	8-2	8-3	8-4	8-33	10-6	10-7	10-98
Contact Size - No. of Contacts	#20-2	#20-3	#20-4	#20-3	#20-6	#20-7	#20-6
Service Rating	I	I	I	I	I	I	I

Shell Size 12



Insert Arrangement	12-3	12-8	12-10	12-12	12-14
Contact Size - No. of Contacts	#16-3	#20-8	#20-10	#20-12	#20-14
Service Rating	II	I	I	I	I

Shell Size 14

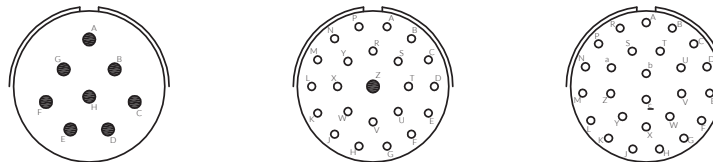


Insert Arrangement	14-5	14-12	14-15
Contact Size - No. of Contacts	#16-5	#20-8, #16-4	#20-14, #16-1
Service Rating	II	I	I



Insert Arrangement	14-18	14-19
Contact Size - No. of Contacts	#20-18	#20-19
Service Rating	I	I

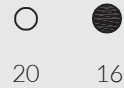
Shell Size 16



Insert Arrangement	16-8	16-23	16-26
Contact Size - No. of Contacts	#16-8	#20-22, #16-1	#20-26
Service Rating	II	I	I

Contact Arrangement

Front face of pin insert or rear face of socket insert illustrated.

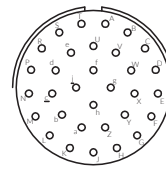
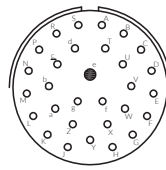
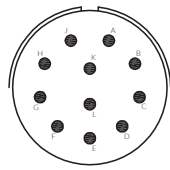


CONTACT LEGEND

20

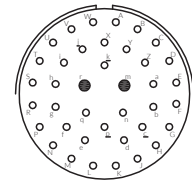
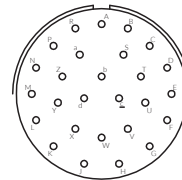
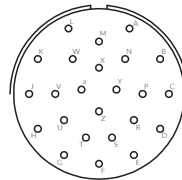
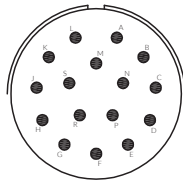
16

Shell Size 18



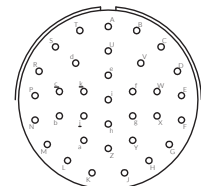
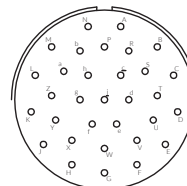
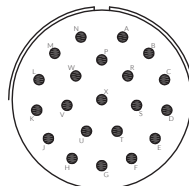
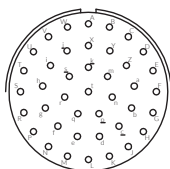
Insert Arrangement	18-11	18-30	18-32
Contact Size - No. of Contacts	#16-11	#20-29, #16-1	#18-32
Service Rating	II	I	I

Shell Size 20



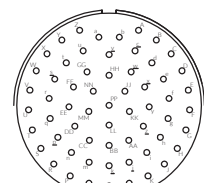
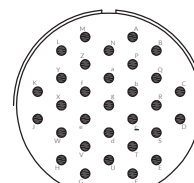
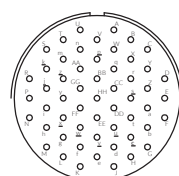
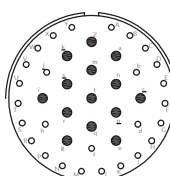
Insert Arrangement	20-16	20-24	20-27	20-39
Contact Size - No. of Contacts	#16-16	#20-24	#20-27	#20-37, #16-2
Service Rating	II	I	I	I

Shell Size 22



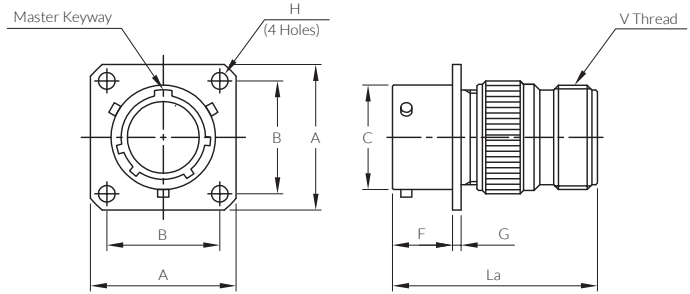
Insert Arrangement	20-41	22-21	22-32	22-34
Contact Size - No. of Contacts	#20-41	#16-21	#20-32	#20-34
Service Rating	I	II	I	I

Shell Size 24



Insert Arrangement	22-41	22-55	24-31	24-61
Contact Size - No. of Contacts	#20-27, #16-14	#20-55	#16-31	#20-61
Service Rating	I	I	I	I

I/MS 3110A Wall Mounting Receptacle

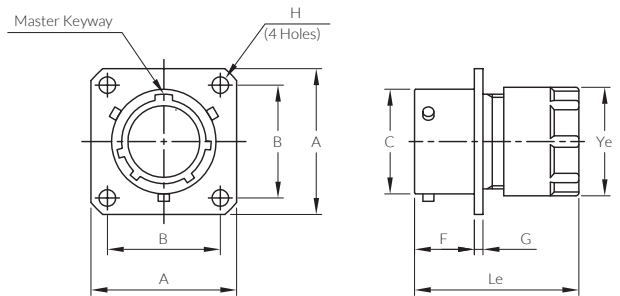


Unit : mm

Part No.	A max.	B ±0.13	C +0.03 -0.13	F +0.79 -0.00	G ±0.41	H +0.25 -0.13	La Ref.	V Thread Class 2A
I/MS 3110A 8	21.03	15.09	12.01	10.95	1.57	3.05	36.11	1/2-28 UNEF
I/MS 3110A 10	24.23	18.26	14.99	10.95	1.57	3.05	36.11	5/8-24 UNEF
I/MS 3110A 12	26.59	20.62	19.05	10.95	1.57	3.05	36.11	3/4-20 UNEF
I/MS 3110A 14	28.98	23.01	22.22	10.95	1.57	3.05	36.11	7/8-20 UNEF
I/MS 3110A 16	31.34	24.61	25.40	10.95	1.57	3.05	36.11	1-20 UNEF
I/MS 3110A 18	33.73	26.97	28.58	10.95	1.57	3.05	36.11	1 3/16-18 UNEF
I/MS 3110A 20	36.91	29.36	31.75	14.12	2.39	3.05	43.26	1 3/16-18 UNEF
I/MS 3110A 22	40.08	31.75	34.92	14.12	2.39	3.05	44.83	1 7/16-18 UNEF
I/MS 3110A 24	43.18	34.93	38.10	14.96	2.39	3.73	44.83	1 7/16-18 UNEF

I/MS 3110E Wall Mounting Receptacle

Grommet & Pressure Nut

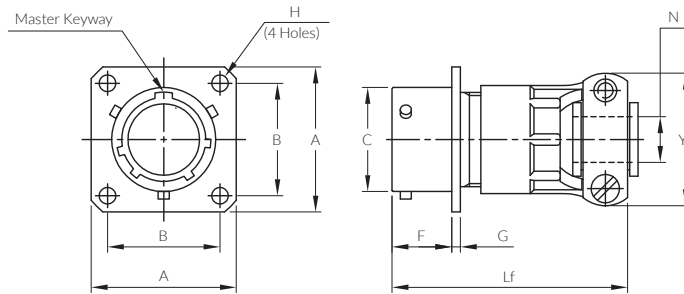


Unit : mm

Part No.	A max.	B ±0.13	C +0.03 -0.13	F +0.79 -0.00	G ±0.41	H +0.25 -0.13	La Ref.	Ye max.
I/MS 3110E 8	21.03	15.09	12.01	10.95	1.57	3.05	33.73	15.44
I/MS 3110E 10	24.23	18.26	14.99	10.95	1.57	3.05	33.73	18.64
I/MS 3110E 12	26.59	20.62	19.05	10.95	1.57	3.05	33.73	21.79
I/MS 3110E 14	28.98	23.01	22.22	10.95	1.57	3.05	33.73	24.99
I/MS 3110E 16	31.34	24.61	25.40	10.95	1.57	3.05	33.73	28.19
I/MS 3110E 18	33.73	26.97	28.58	10.95	1.57	3.05	33.73	31.34
I/MS 3110E 20	36.91	29.36	31.75	14.12	2.39	3.05	38.89	34.54
I/MS 3110E 22	40.08	31.75	34.92	14.12	2.39	3.05	38.89	37.69
I/MS 3110E 24	43.18	34.93	38.10	14.96	2.39	3.73	40.49	40.89

I/MS 3110F Wall Mounting Receptacle

Integral Cable Clamp with Grommet

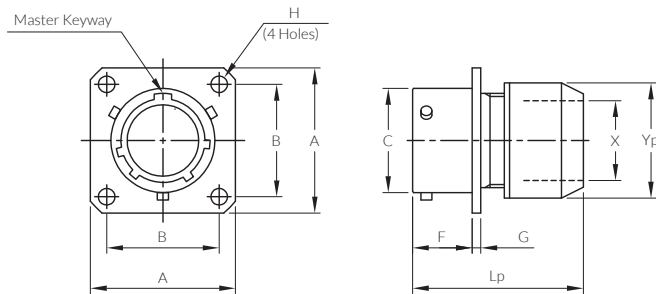


Unit : mm

Part No.	A max.	B ±0.13	C +0.03 -0.13	F +0.79 -0.00	G ±0.41	H +0.25 -0.13	Lf Ref.	N ±0.25	Yf max.
I/MS 3110F 8	21.03	15.09	12.01	10.95	1.57	3.05	48.82	3.18	21.03
I/MS 3110F 10	24.23	18.26	14.99	10.95	1.57	3.05	48.82	4.78	22.63
I/MS 3110F 12	26.59	20.62	19.05	10.95	1.57	3.05	48.82	7.92	25.81
I/MS 3110F 14	28.98	23.01	22.22	10.95	1.57	3.05	48.82	9.53	28.98
I/MS 3110F 16	31.34	24.61	25.40	10.95	1.57	3.05	51.99	12.70	30.56
I/MS 3110F 18	33.73	26.97	28.58	10.95	1.57	3.05	52.78	15.88	37.31
I/MS 3110F 20	36.91	29.36	31.75	14.12	2.39	3.05	59.54	15.88	37.31
I/MS 3110F 22	40.08	31.75	34.92	14.12	2.39	3.05	59.54	19.05	42.06
I/MS 3110F 24	43.18	34.93	38.10	14.96	2.39	3.73	61.11	20.32	44.45

I/MS 3110P Wall Mounting Receptacle

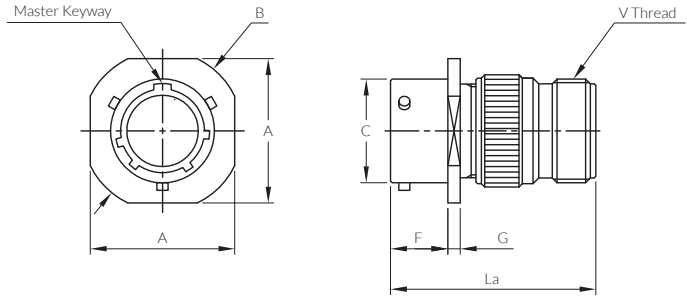
Potting Seal



Unit : mm

Part No.	A max.	B ±0.13	C +0.03 -0.13	F +0.79 -0.00	G ±0.41	H +0.25 -0.13	Lp Ref.	X min.	Yp max.
I/MS 3110P 8	21.03	15.09	12.01	10.95	1.57	3.05	36.91	8.05	15.44
I/MS 3110P 10	24.23	18.26	14.99	10.95	1.57	3.05	36.91	11.02	18.64
I/MS 3110P 12	26.59	20.62	19.05	10.95	1.57	3.05	36.91	13.92	21.79
I/MS 3110P 14	28.98	23.01	22.22	10.95	1.57	3.05	36.91	17.09	24.99
I/MS 3110P 16	31.34	24.61	25.40	10.95	1.57	3.05	36.91	20.27	28.19
I/MS 3110P 18	33.73	26.97	28.58	10.95	1.57	3.05	36.91	22.83	31.34
I/MS 3110P 20	36.91	29.36	31.75	14.12	2.39	3.05	42.47	26.01	34.54
I/MS 3110P 22	40.08	31.75	34.92	14.12	2.39	3.05	42.47	29.18	37.69
I/MS 3110P 24	43.18	34.93	38.10	14.96	2.39	3.73	44.04	32.36	40.89

I/MS 3111A Cable Connecting Plug

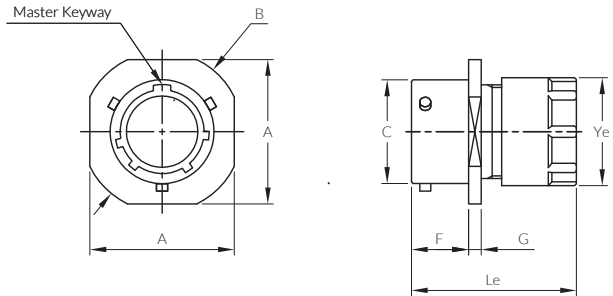


Unit : mm

Part No.	A max.	B ±0.51	C +0.03 -0.13	F +0.79 -0.00	G ±0.41	La Ref.	V Thread Class 2A
I/MS 3111A 8	21.03	23.83	12.01	10.16	2.39	36.11	1/2-28 UNEF
I/MS 3111A 10	24.23	26.97	14.99	10.16	2.39	36.11	5/8-24 UNEF
I/MS 3111A 12	26.59	29.36	19.05	10.16	2.39	36.11	3/4-20 UNEF
I/MS 3111A 14	28.98	31.75	22.22	10.16	2.39	36.11	7/8-20 UNEF
I/MS 3111A 16	31.34	34.14	25.40	10.16	2.39	36.11	1-20 UNEF
I/MS 3111A 18	33.73	36.53	28.58	10.16	2.39	36.11	1 3/16-18 UNEF
I/MS 3111A 20	36.91	39.67	31.75	13.59	2.92	43.26	1 3/16-18 UNEF
I/MS 3111A 22	40.08	42.88	34.92	13.59	2.92	44.83	1 7/16-18 UNEF
I/MS 3111A 24	43.18	46.02	38.10	14.17	2.92	44.83	1 7/16-18 UNEF

I/MS 3111E Cable Connecting Plug

Grommet & Pressure Nut

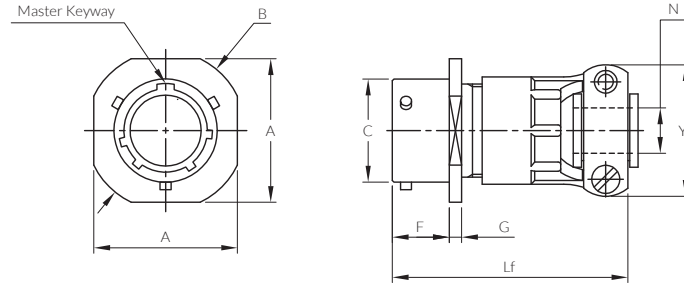


Unit : mm

Part No.	A max.	B ±0.51	C +0.03 -0.13	F +0.79 -0.00	G ±0.41	Le Ref.	Ye max.
I/MS 3111E 8	21.03	23.83	12.01	10.16	2.39	33.73	15.44
I/MS 3111E 10	24.23	26.97	14.99	10.16	2.39	33.73	18.64
I/MS 3111E 12	26.59	29.36	19.05	10.16	2.39	33.73	21.79
I/MS 3111E 14	28.98	31.75	22.22	10.16	2.39	33.73	24.99
I/MS 3111E 16	31.34	34.14	25.40	10.16	2.39	33.73	28.19
I/MS 3111E 18	33.73	36.53	28.58	10.16	2.39	33.73	31.34
I/MS 3111E 20	36.91	39.67	31.75	13.59	2.92	38.89	34.54
I/MS 3111E 22	40.08	42.88	34.92	13.59	2.92	38.89	37.69
I/MS 3111E 24	43.18	46.02	38.10	14.17	2.92	40.49	40.89

I/MS 3111F Cable Connecting Plug

Integral Cable Clamp with Grommet

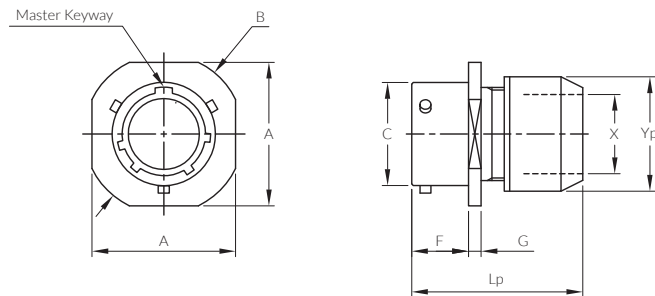


Unit : mm

Part No.	A max.	B ±0.51	C +0.03 -0.13	F +0.79 -0.00	G ±0.41	Lf Ref.	N ±0.25	Yf max.
I/MS 3111F 8	21.03	23.83	12.01	10.16	2.39	48.82	3.18	21.03
I/MS 3111F 10	24.23	26.97	14.99	10.16	2.39	48.82	4.78	22.63
I/MS 3111F 12	26.59	29.36	19.05	10.16	2.39	48.82	7.92	25.81
I/MS 3111F 14	28.98	31.75	22.22	10.16	2.39	48.82	9.53	28.98
I/MS 3111F 16	31.34	34.14	25.40	10.16	2.39	51.99	12.70	30.56
I/MS 3111F 18	33.73	36.53	28.58	10.16	2.39	52.78	15.88	37.31
I/MS 3111F 20	36.91	39.67	31.75	13.59	2.92	59.54	15.88	37.31
I/MS 3111F 22	40.08	42.88	34.92	13.59	2.92	59.54	19.05	42.06
I/MS 3111F 24	43.18	46.02	38.10	14.17	2.92	61.11	20.32	44.45

I/MS 3111P Cable Connecting Plug

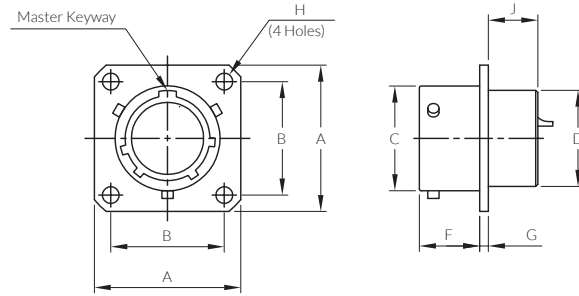
Potting Seal



Unit : mm

Part No.	A max.	B ±0.51	C +0.03 -0.13	F +0.79 -0.00	G ±0.41	Lp Ref.	X min.	Yp max.
I/MS 3111P 8	21.03	23.83	12.01	10.16	2.39	36.91	8.05	15.44
I/MS 3111P 10	24.23	26.97	14.99	10.16	2.39	36.91	11.02	18.64
I/MS 3111P 12	26.59	29.36	19.05	10.16	2.39	36.91	13.92	21.79
I/MS 3111P 14	28.98	31.75	22.22	10.16	2.39	36.91	17.09	24.99
I/MS 3111P 16	31.34	34.14	25.40	10.16	2.39	36.91	20.27	28.19
I/MS 3111P 18	33.73	36.53	28.58	10.16	2.39	36.91	22.83	31.34
I/MS 3111P 20	36.91	39.67	31.75	13.59	2.92	42.47	26.01	34.54
I/MS 3111P 22	40.08	42.88	34.92	13.59	2.92	42.47	29.18	37.69
I/MS 3111P 24	43.18	46.02	38.10	14.17	2.92	44.04	32.36	40.89

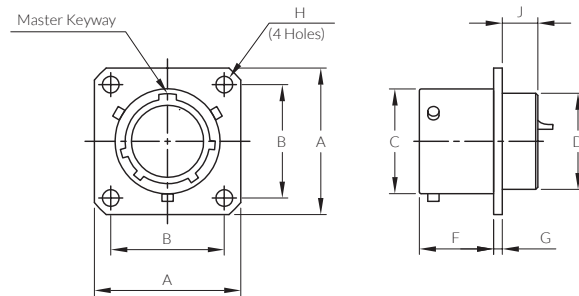
I/MS 3112E Box Mounting Receptacle



Unit : mm

Part No.	A max.	B ±0.13	C +0.03 -0.13	D +0.79 -0.00	F +0.79 -0.00	G ±0.41	H +0.25 -0.13	J max.
I/MS 3112E 8	21.03	15.09	12.01	11.12	10.95	1.57	3.05	8.99
I/MS 3112E 10	24.23	18.26	14.99	14.27	10.95	1.57	3.05	8.99
I/MS 3112E 12	26.59	20.62	19.05	17.48	10.95	1.57	3.05	8.99
I/MS 3112E 14	28.98	23.01	22.22	20.62	10.95	1.57	3.05	8.99
I/MS 3112E 16	31.34	24.61	25.40	23.83	10.95	1.57	3.05	8.99
I/MS 3112E 18	33.73	26.97	28.58	26.97	10.95	1.57	3.05	8.99
I/MS 3112E 20	36.91	29.36	31.75	30.18	14.12	2.39	3.05	10.59
I/MS 3112E 22	40.08	31.75	34.92	33.32	14.12	2.39	3.05	10.59
I/MS 3112E 24	43.18	34.93	38.10	36.53	14.96	2.39	3.73	11.30

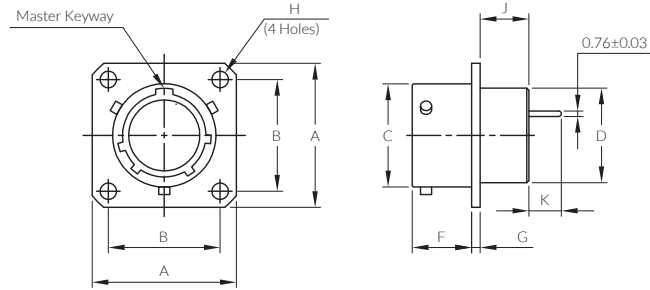
I/MS 3112EP Box Mounting Receptacle for Rear Panel Mounting



Unit : mm

Part No.	A max.	B ±0.13	C +0.03 -0.13	D +0.79 -0.00	F +0.79 -0.00	G ±0.41	H +0.25 -0.13	J max.
I/MS 3112EP 8	21.03	15.09	12.01	11.12	13.49	1.57	3.05	6.45
I/MS 3112EP 10	24.23	18.26	14.99	14.27	13.49	1.57	3.05	6.45
I/MS 3112EP 12	26.59	20.62	19.05	17.48	13.49	1.57	3.05	6.45
I/MS 3112EP 14	28.98	23.01	22.22	20.62	13.49	1.57	3.05	6.45
I/MS 3112EP 16	31.34	24.61	25.40	23.83	13.49	1.57	3.05	6.45
I/MS 3112EP 18	33.73	26.97	28.58	26.97	13.49	1.57	3.05	6.45
I/MS 3112EP 20	36.91	29.36	31.75	30.18	16.66	2.39	3.05	8.05
I/MS 3112EP 22	40.08	31.75	34.92	33.32	16.66	2.39	3.05	8.05
I/MS 3112EP 24	43.18	34.93	38.10	36.53	16.66	2.39	3.73	8.05

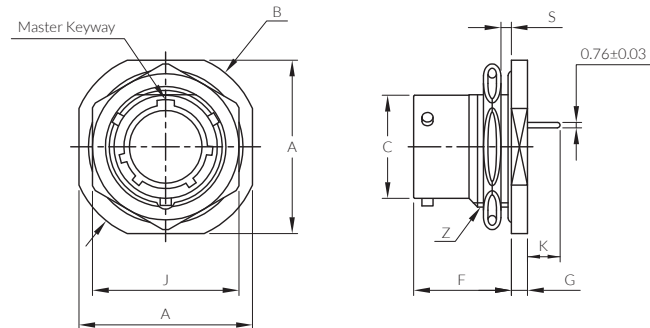
I/MS 3112PC Box Mounting Receptacle with PCB Contacts



Unit : mm

Part No.	A max.	B ±0.13	C +0.03 -0.13	D +0.79 -0.41	F +0.79 -0.00	G ±0.41	H +0.25 -0.13	J max.	K ±0.50
I/MS 3112PC 8	21.03	15.09	12.01	11.12	10.95	1.57	3.05	8.99	9.50
I/MS 3112PC 10	24.23	18.26	14.99	14.27	10.95	1.57	3.05	8.99	9.50
I/MS 3112PC 12	26.59	20.62	19.05	17.48	10.95	1.57	3.05	8.99	9.50
I/MS 3112PC 14	28.98	23.01	22.22	20.62	10.95	1.57	3.05	8.99	9.50
I/MS 3112PC 16	31.34	24.61	25.40	23.83	10.95	1.57	3.05	8.99	9.50
I/MS 3112PC 18	33.73	26.97	28.58	26.97	10.95	1.57	3.05	8.99	9.50
I/MS 3112PC 20	36.91	29.36	31.75	30.18	14.12	2.39	3.05	10.59	8.50
I/MS 3112PC 22	40.08	31.75	34.92	33.32	14.12	2.39	3.05	10.59	8.50
I/MS 3112PC 24	43.18	34.93	38.10	36.53	14.96	2.39	3.73	11.30	8.50

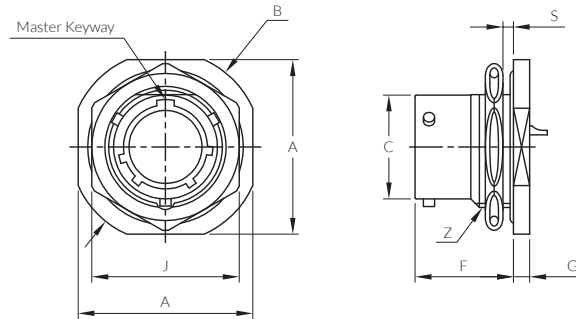
I/MS 3114PC Jam Nut Receptacle with PCB Contacts



Unit : mm

Part No.	A max.	B +0.00 -0.81	C +0.03 -0.13	F +0.79 -0.00	G ±0.51	J ±0.43	K ±0.50	S Panel thick min / max	Z Thread Class 2A
I/MS 3114PC 8	24.23	27.38	12.01	17.55	2.97	19.05	9.50	1.57 / 3.18	9/16-24 UNEF
I/MS 3114PC 10	27.38	30.56	14.99	17.55	2.97	22.23	9.50	1.57 / 3.18	11/16-24 UNEF
I/MS 3114PC 12	32.16	35.33	19.05	17.55	2.97	26.97	9.50	1.57 / 3.18	7/8-20 UNEF
I/MS 3114PC 14	35.33	38.51	22.22	17.55	2.97	30.18	9.50	1.57 / 3.18	1-20 UNEF
I/MS 3114PC 16	38.51	41.68	25.40	17.55	2.97	33.32	9.50	1.57 / 3.18	1 1/8-18 UNEF
I/MS 3114PC 18	41.68	44.86	28.58	17.55	2.97	36.53	9.50	1.57 / 3.18	1 1/4-18 UNEF
I/MS 3114PC 20	46.43	49.63	31.75	22.33	3.76	39.67	8.50	1.57 / 6.35	1 3/8-18 UNEF
I/MS 3114PC 22	49.63	52.78	34.92	22.33	3.76	42.88	8.50	1.57 / 6.35	1 1/2-18 UNEF
I/MS 3114PC 24	52.78	55.96	38.10	23.16	3.76	46.02	8.50	1.57 / 6.35	1 5/8-18 UNEF

I/MS 3114A Jam Nut Receptacle

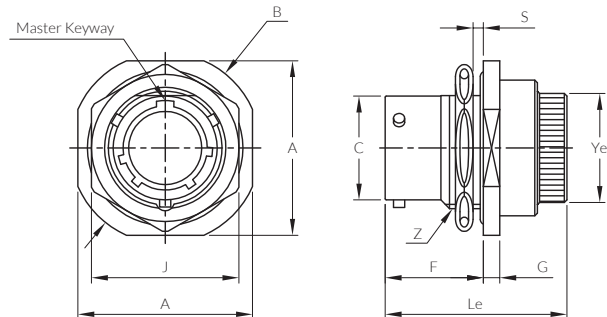


Unit : mm

Part No.	A max.	B +0.00 -0.81	C +0.03 -0.13	F +0.79 -0.00	G ±0.51	J ±0.43	S Panel thick min / max	Z Thread Class 2A
I/MS 3114A 8	24.23	27.38	12.01	17.55	2.97	19.05	1.57 / 3.18	9/16-24 UNEF
I/MS 3114A 10	27.38	30.56	14.99	17.55	2.97	22.23	1.57 / 3.18	11/16-24 UNEF
I/MS 3114A 12	32.16	35.33	19.05	17.55	2.97	26.97	1.57 / 3.18	7/8-20 UNEF
I/MS 3114A 14	35.33	38.51	22.22	17.55	2.97	30.18	1.57 / 3.18	1-20 UNEF
I/MS 3114A 16	38.51	41.68	25.40	17.55	2.97	33.32	1.57 / 3.18	1 1/8-18 UNEF
I/MS 3114A 18	41.68	44.86	28.58	17.55	2.97	36.53	1.57 / 3.18	1 1/4-18 UNEF
I/MS 3114A 20	46.43	49.63	31.75	22.33	3.76	39.67	1.57 / 6.35	1 3/8-18 UNEF
I/MS 3114A 22	49.63	52.78	34.92	22.33	3.76	42.88	1.57 / 6.35	1 1/2-18 UNEF
I/MS 3114A 24	52.78	55.96	38.10	23.16	3.76	46.02	1.57 / 6.35	1 5/8-18 UNEF

I/MS 3114E Jam Nut Receptacle

Grommet & Pressure Nut

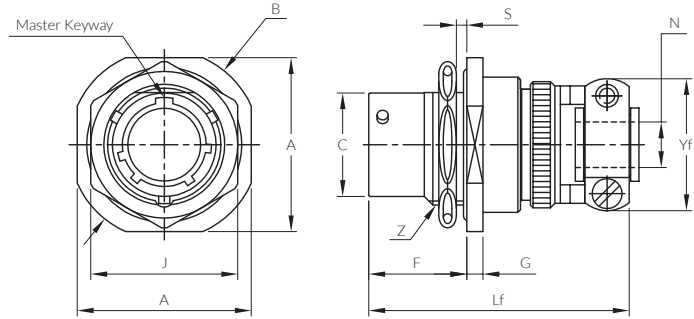


Unit : mm

Part No.	A max.	B +0.00 -0.81	C +0.03 -0.13	F +0.79 -0.00	G ±0.51	J ±0.43	Le max.	S Panel thick min / max	Ye max.	Z Thread Class 2A
I/MS 3114E 8	24.23	27.38	12.01	17.55	2.97	19.05	34.14	1.57 / 3.18	19.05	9/16-24 UNEF
I/MS 3114E 10	27.38	30.56	14.99	17.55	2.97	22.23	34.14	1.57 / 3.18	22.23	11/16-24 UNEF
I/MS 3114E 12	32.16	35.33	19.05	17.55	2.97	26.97	34.14	1.57 / 3.18	25.40	7/8-20 UNEF
I/MS 3114E 14	35.33	38.51	22.22	17.55	2.97	30.18	34.14	1.57 / 3.18	28.58	1-20 UNEF
I/MS 3114E 16	38.51	41.68	25.40	17.55	2.97	33.32	34.14	1.57 / 3.18	31.75	1 1/8-18 UNEF
I/MS 3114E 18	41.68	44.86	28.58	17.55	2.97	36.53	34.14	1.57 / 3.18	33.93	1 1/4-18 UNEF
I/MS 3114E 20	46.43	49.63	31.75	22.33	3.76	39.67	40.49	1.57 / 6.35	38.89	1 3/8-18 UNEF
I/MS 3114E 22	49.63	52.78	34.92	22.33	3.76	42.88	40.49	1.57 / 6.35	42.06	1 1/2-18 UNEF
I/MS 3114E 24	52.78	55.96	38.10	23.16	3.76	46.02	41.68	1.57 / 6.35	45.24	1 5/8-18 UNEF

I/MS 3114F Jam Nut Receptacle

Integral Cable Clamp with Grommet

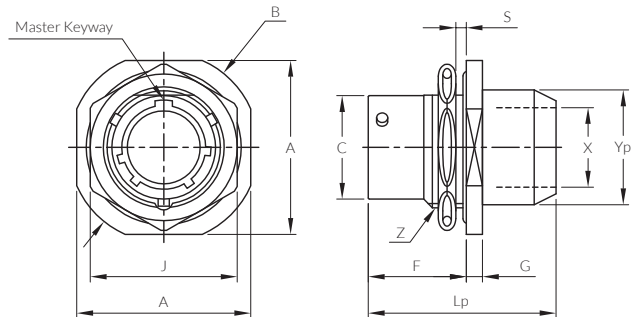


Unit : mm

Part No.	A max.	B +0.00 -0.81	C +0.03 -0.13	F +0.79 -0.00	G ±0.51	J ±0.43	Lf max.	N ±0.25	S Panel thick min / max	Yf max.	Z Thread Class 2A
I/MS 3114F 8	24.23	27.38	12.01	17.55	2.97	19.05	48.41	3.18	1.57 / 3.18	21.03	9/16-24 UNEF
I/MS 3114F 10	27.38	30.56	14.99	17.55	2.97	22.23	48.41	4.78	1.57 / 3.18	22.63	11/16-24 UNEF
I/MS 3114F 12	32.16	35.33	19.05	17.55	2.97	26.97	48.41	7.92	1.57 / 3.18	25.81	7/8-20 UNEF
I/MS 3114F 14	35.33	38.51	22.22	17.55	2.97	30.18	48.41	9.53	1.57 / 3.18	28.98	1-20 UNEF
I/MS 3114F 16	38.51	41.68	25.40	17.55	2.97	33.32	51.99	12.70	1.57 / 3.18	30.56	1 1/8-18 UNEF
I/MS 3114F 18	41.68	44.86	28.58	17.55	2.97	36.53	52.78	15.88	1.57 / 3.18	37.31	1 1/4-18 UNEF
I/MS 3114F 20	46.43	49.63	31.75	22.33	3.76	39.67	59.13	15.88	1.57 / 6.35	37.31	1 3/8-18 UNEF
I/MS 3114F 22	49.63	52.78	34.92	22.33	3.76	42.88	59.13	19.05	1.57 / 6.35	42.06	1 1/2-18 UNEF
I/MS 3114F 24	52.78	55.96	38.10	23.16	3.76	46.02	62.31	20.32	1.57 / 6.35	44.45	1 5/8-18 UNEF

I/MS 3114P Jam Nut Receptacle

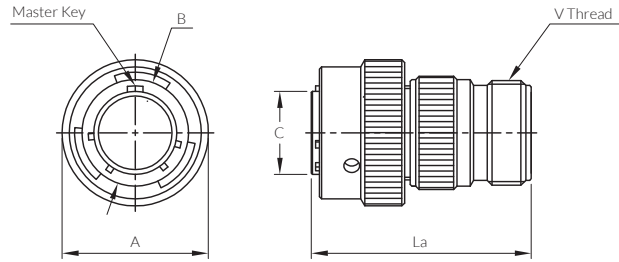
Potting Seal



Unit : mm

Part No.	A max.	B +0.00 -0.81	C +0.03 -0.13	F +0.79 -0.00	G ±0.51	J ±0.43	Lp max.	S Panel thick min / max	X min.	Yp max.	Z Thread Class 2A
I/MS 3114E 8	24.23	27.38	12.01	17.55	2.97	19.05	35.33	1.57 / 3.18	8.05	15.44	9/16-24 UNEF
I/MS 3114E 10	27.38	30.56	14.99	17.55	2.97	22.23	35.33	1.57 / 3.18	11.02	18.64	11/16-24 UNEF
I/MS 3114E 12	32.16	35.33	19.05	17.55	2.97	26.97	35.33	1.57 / 3.18	13.92	21.79	7/8-20 UNEF
I/MS 3114E 14	35.33	38.51	22.22	17.55	2.97	30.18	35.33	1.57 / 3.18	17.09	24.99	1-20 UNEF
I/MS 3114E 16	38.51	41.68	25.40	17.55	2.97	33.32	35.33	1.57 / 3.18	20.27	28.19	1 1/8-18 UNEF
I/MS 3114E 18	41.68	44.86	28.58	17.55	2.97	36.53	35.33	1.57 / 3.18	22.83	31.34	1 1/4-18 UNEF
I/MS 3114E 20	46.43	49.63	31.75	22.33	3.76	39.67	41.68	1.57 / 6.35	26.01	34.54	1 3/8-18 UNEF
I/MS 3114E 22	49.63	52.78	34.92	22.33	3.76	42.88	41.68	1.57 / 6.35	29.18	37.69	1 1/2-18 UNEF
I/MS 3114E 24	52.78	55.96	38.10	23.16	3.76	46.02	43.26	1.57 / 6.35	32.36	40.89	1 5/8-18 UNEF

I/MS 3116A Straight Plug

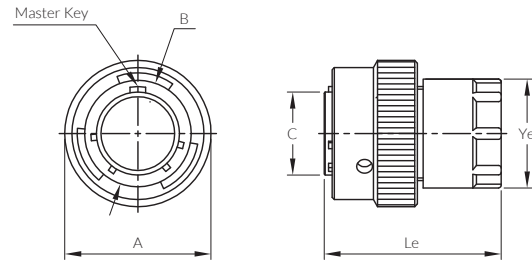


Unit : mm

Part No.	A max.	B +0.13 -0.03	C ±0.25	La Ref.	V Thread Class 2A
I/MS 3116A 8	19.86	12.22	8.80	36.68	1/2-28 UNEF
I/MS 3116A 10	23.52	15.29	12.00	36.68	5/8-24 UNEF
I/MS 3116A 12	26.49	19.33	15.00	36.68	3/4-20UNEF
I/MS 3116A 14	30.05	22.48	18.10	36.68	7/8-20 UNEF
I/MS 3116A 16	33.15	25.65	21.30	36.68	1-20 UNEF
I/MS 3116A 18	35.33	28.85	23.85	36.68	1 3/16-18 UNEF
I/MS 3116A 20	38.89	32.00	27.03	43.89	1 3/16-18 UNEF
I/MS 3116A 22	42.06	35.18	30.20	43.89	1 7/16-18 UNEF
I/MS 3116A 24	45.13	38.35	33.38	44.15	1 7/16-18 UNEF

I/MS 3116E Straight Plug

Grommet & Pressure Nut

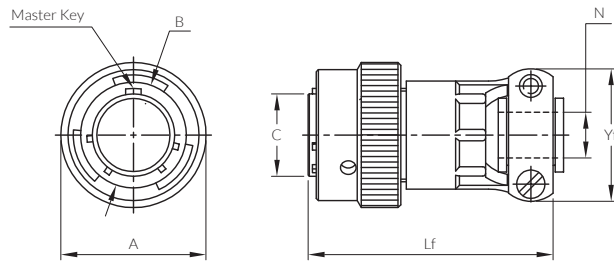


Unit : mm

Part No.	A max.	B +0.13 -0.03	C ±0.25	Le Ref.	Ye max.
I/MS 3116E 8	19.86	12.22	8.80	33.73	15.44
I/MS 3116E 10	23.52	15.29	12.00	33.73	18.64
I/MS 3116E 12	26.49	19.33	15.00	33.73	21.79
I/MS 3116E 14	30.05	22.48	18.10	33.73	24.99
I/MS 3116E 16	33.15	25.65	21.30	33.73	28.19
I/MS 3116E 18	35.33	28.85	23.85	33.73	31.34
I/MS 3116E 20	38.89	32.00	27.03	36.91	34.54
I/MS 3116E 22	42.06	35.18	30.20	36.91	37.69
I/MS 3116E 24	45.13	38.35	33.38	38.35	40.89

I/MS 3116F Straight Plug

Integral Cable Clamp with Grommet

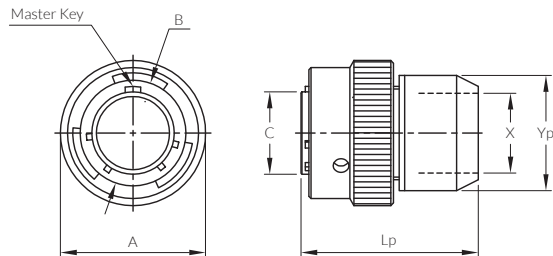


Unit : mm

Part No.	A max.	B +0.13 -0.03	C +0.03 -0.13	Lf Ref.	N ±0.25	Yf max.
I/MS 3116F 8	19.86	12.22	8.80	48.41	3.18	21.03
I/MS 3116F 10	23.52	15.29	12.00	48.41	4.78	22.63
I/MS 3116F 12	26.49	19.33	15.00	48.41	7.92	25.81
I/MS 3116F 14	30.05	22.48	18.10	48.41	9.53	28.98
I/MS 3116F 16	33.15	25.65	21.30	51.99	12.70	30.56
I/MS 3116F 18	35.33	28.85	23.85	55.32	15.88	37.31
I/MS 3116F 20	38.89	32.00	27.03	57.15	15.88	37.31
I/MS 3116F 22	42.06	35.18	30.20	57.15	19.05	42.06
I/MS 3116F 24	45.13	38.35	33.38	58.72	20.32	44.45

I/MS 3116P Straight Plug

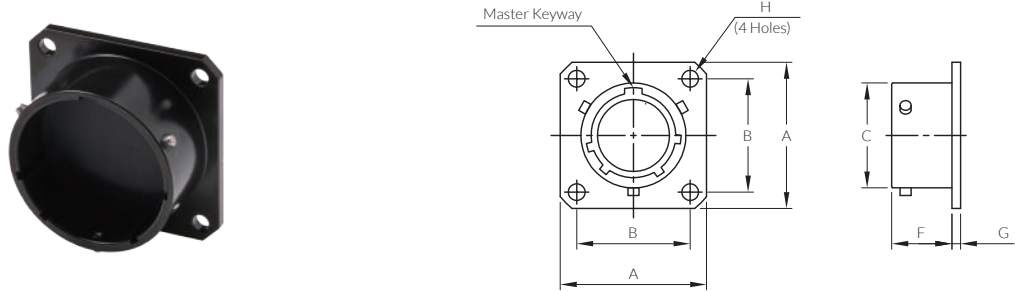
Potting Seal



Unit : mm

Part No.	A max.	B +0.13 -0.03	C ±0.25	Lp Ref.	X min.	Yp max.
I/MS 3116P 8	19.86	12.22	8.80	38.10	8.05	15.44
I/MS 3116P 10	23.52	15.29	12.00	38.10	11.02	18.64
I/MS 3116P 12	26.49	19.33	15.00	38.10	13.92	21.79
I/MS 3116P 14	30.05	22.48	18.10	38.10	17.09	24.99
I/MS 3116P 16	33.15	25.65	21.30	38.10	20.27	28.19
I/MS 3116P 18	35.33	28.85	23.85	38.10	22.83	31.34
I/MS 3116P 20	38.89	32.00	27.03	40.87	26.01	34.54
I/MS 3116P 22	42.06	35.18	30.20	40.87	29.18	37.69
I/MS 3116P 24	45.13	38.35	33.38	42.85	32.36	40.89

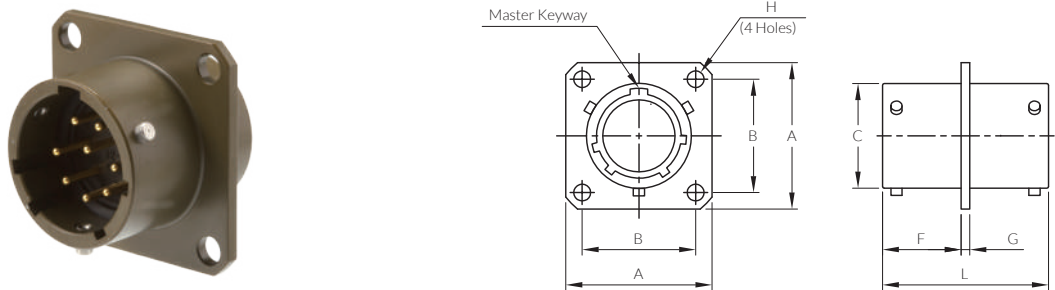
I/MS 3115 Dummy Stowage Receptacle



Unit : mm

Part No.	A max.	B +0.13	C +0.03 -0.13	F +0.79 -0.00	G ±0.41	H +0.25 -0.13
I/MS 3115 8	21.03	15.09	12.01	11.73	1.57	3.05
I/MS 3115 10	24.23	18.26	14.99	11.73	1.57	3.05
I/MS 3115 12	26.59	20.62	19.05	11.73	1.57	3.05
I/MS 3115 14	28.98	23.01	22.22	11.73	1.57	3.05
I/MS 3115 16	31.34	24.61	25.40	11.73	1.57	3.05
I/MS 3115 18	33.73	26.97	28.58	11.73	1.57	3.05
I/MS 3115 20	36.91	29.36	31.75	14.12	2.39	3.05
I/MS 3115 22	40.08	31.75	34.92	14.12	2.39	3.05
I/MS 3115 24	43.18	34.93	38.10	14.96	2.39	3.73

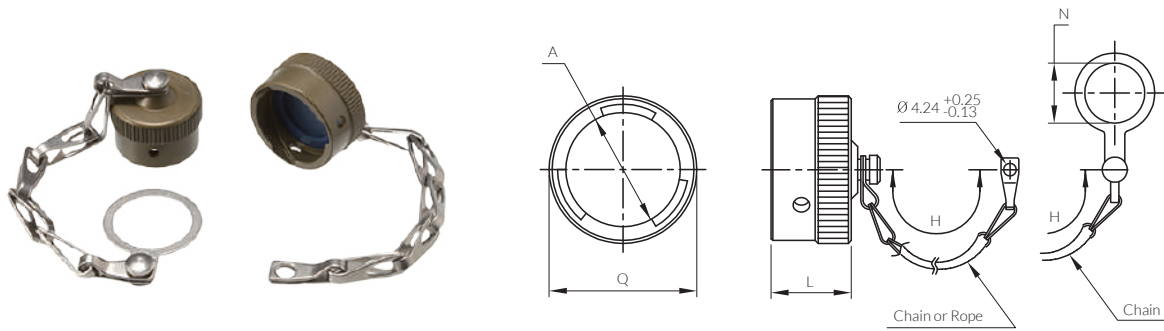
I/MS 3119E Thru-Bulkhead Receptacle



Unit : mm

Part No.	A max.	B ±0.13	C +0.03 -0.13	F +0.79 -0.00	G ±0.41	H +0.25 -0.13	L Ref.
I/MS 3119E 8	21.03	15.09	12.01	14.27	1.57	3.05	28.58
I/MS 3119E 10	24.23	18.26	14.99	14.27	1.57	3.05	28.58
I/MS 3119E 12	26.59	20.62	19.05	14.27	1.57	3.05	28.58
I/MS 3119E 14	28.98	23.01	22.22	14.27	1.57	3.05	28.58
I/MS 3119E 16	31.34	24.61	25.40	14.27	1.57	3.05	28.58
I/MS 3119E 18	33.73	26.97	28.58	14.27	1.57	3.05	28.58
I/MS 3119E 20	36.91	29.36	31.75	17.48	2.39	3.05	35.71
I/MS 3119E 22	40.08	31.75	34.92	17.48	2.39	3.05	35.71
I/MS 3119E 24	43.18	34.93	38.10	17.48	2.39	3.73	35.71

I/MS 3181 Protective Cover for Receptacle

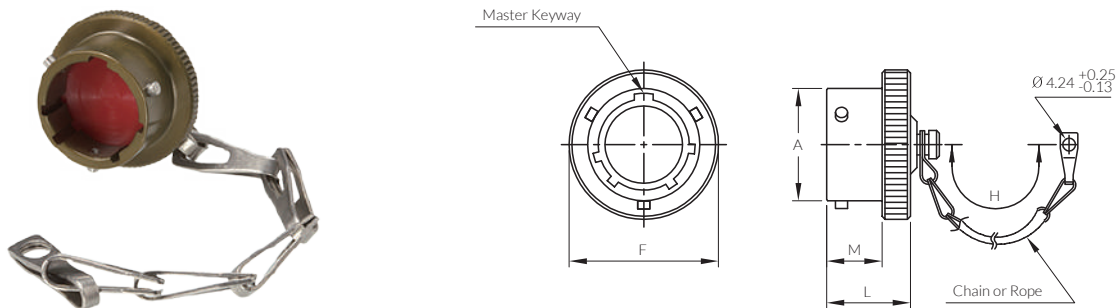


Unit : mm

Part No.	Dash no. (with Chain)	Dash no. (with Chain and Ring)	Dash no. (with Rope)	A +0.13 -0.03	H +12.70 -6.35	L max.	N min.	Q max.
I/MS 3181-*	8C	8N	8R	12.22	76.20	14.27	14.68	19.86
I/MS 3181-*	10C	10N	10R	15.29	76.20	14.27	17.86	23.52
I/MS 3181-*	12C	12N	12R	19.33	88.90	14.27	22.63	26.49
I/MS 3181-*	14C	14N	14R	22.48	88.90	14.27	25.81	30.05
I/MS 3181-*	16C	16N	16R	25.65	88.90	14.27	28.98	33.15
I/MS 3181-*	18C	18N	18R	28.85	88.90	14.27	32.16	35.33
I/MS 3181-*	20C	20N	20R	32.00	101.60	14.27	35.33	38.89
I/MS 3181-*	22C	22N	22R	35.18	101.60	14.27	38.51	42.06
I/MS 3181-*	24C	24N	24R	38.35	101.60	15.29	41.68	45.13

NOTE : Chain(1) - INC standard (material - copper alloy)
Chain(2) - Available option (material - stainless steel)

I/MS 3180 Protective Cover for Plug



Unit : mm

Part No.	Dash no. (with Chain)	Dash no. (with Rope)	A +0.13 -0.03	F max.	H +12.70 -6.35	L max.	M +0.25 -0.00
I/MS 3180-*	8C	8R	12.01	18.26	76.20	14.27	9.35
I/MS 3180-*	10C	10R	14.99	21.44	76.20	14.27	9.35
I/MS 3180-*	12C	12R	19.05	25.40	88.90	14.27	9.35
I/MS 3180-*	14C	14R	22.22	28.58	88.90	14.27	9.35
I/MS 3180-*	16C	16R	25.40	31.75	88.90	14.27	9.35
I/MS 3180-*	18C	18R	28.58	34.92	88.90	14.27	9.35
I/MS 3180-*	20C	20R	31.75	38.10	101.60	15.88	10.92
I/MS 3180-*	22C	22R	34.92	41.28	101.60	15.88	10.92
I/MS 3180-*	24C	24R	38.10	44.45	101.60	16.71	11.76

NOTE : Chain(1) - INC standard (material - copper alloy)
Chain(2) - Available option (material - stainless steel)



MIL-DTL 5015 Series



MIL-DTL 26482 Series



VG95234 Series

POWER YOUR APPLICATIONS WITH
**CIRCULAR CONNECTORS
YOU CAN DEPEND ON**

Since 2002, INC has provided customers with circular connector solutions to power their specific applications. Over the years, we've expanded our product lines and services to meet market demands, while maintaining a commitment to top quality, competitive pricing and world class lead times. These efforts have made us a market leader in the circular connector industry and established a foundation to continue innovating for the future.



International
Network —
Connectors


www.inconnector.co.kr

This Connector Guide is intended to provide general information about various products. Information contained herein is for general reference only and subject to change without notice. Products may deviate from the listed description, specifications, technical data, dimensions and illustrations provided in this Connector Guide. Please contact INC to discuss your specific application to ensure that the desired products meet your specific requirements. No information or data contained in this Connector Guide shall be construed to create any liability on the part of INC.



International
Network —
Connectors

 21, CheongAn-ro, Bupyeong-gu, Incheon, Korea

 TEL +82-32-545-1411~3 FAX +82-32-545-1417

 www.inconnector.co.kr